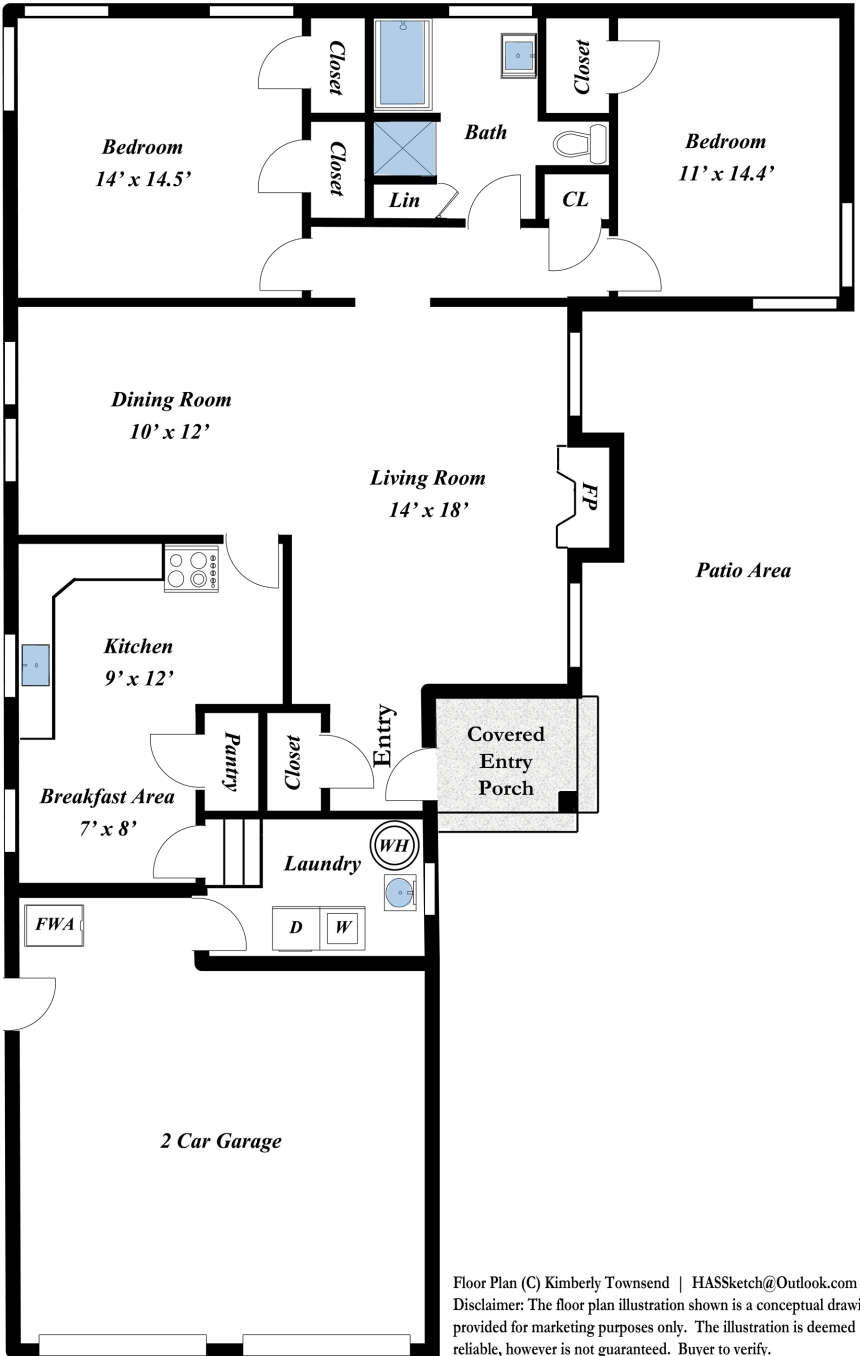


1028 Hollyburne Avenue, Menlo Park, CA 94025

Living Area: 1,250 sq ft



Floor Plan (C) Kimberly Townsend | HASSketch@Outlook.com
Disclaimer: The floor plan illustration shown is a conceptual drawing provided for marketing purposes only. The illustration is deemed reliable, however is not guaranteed. Buyer to verify.