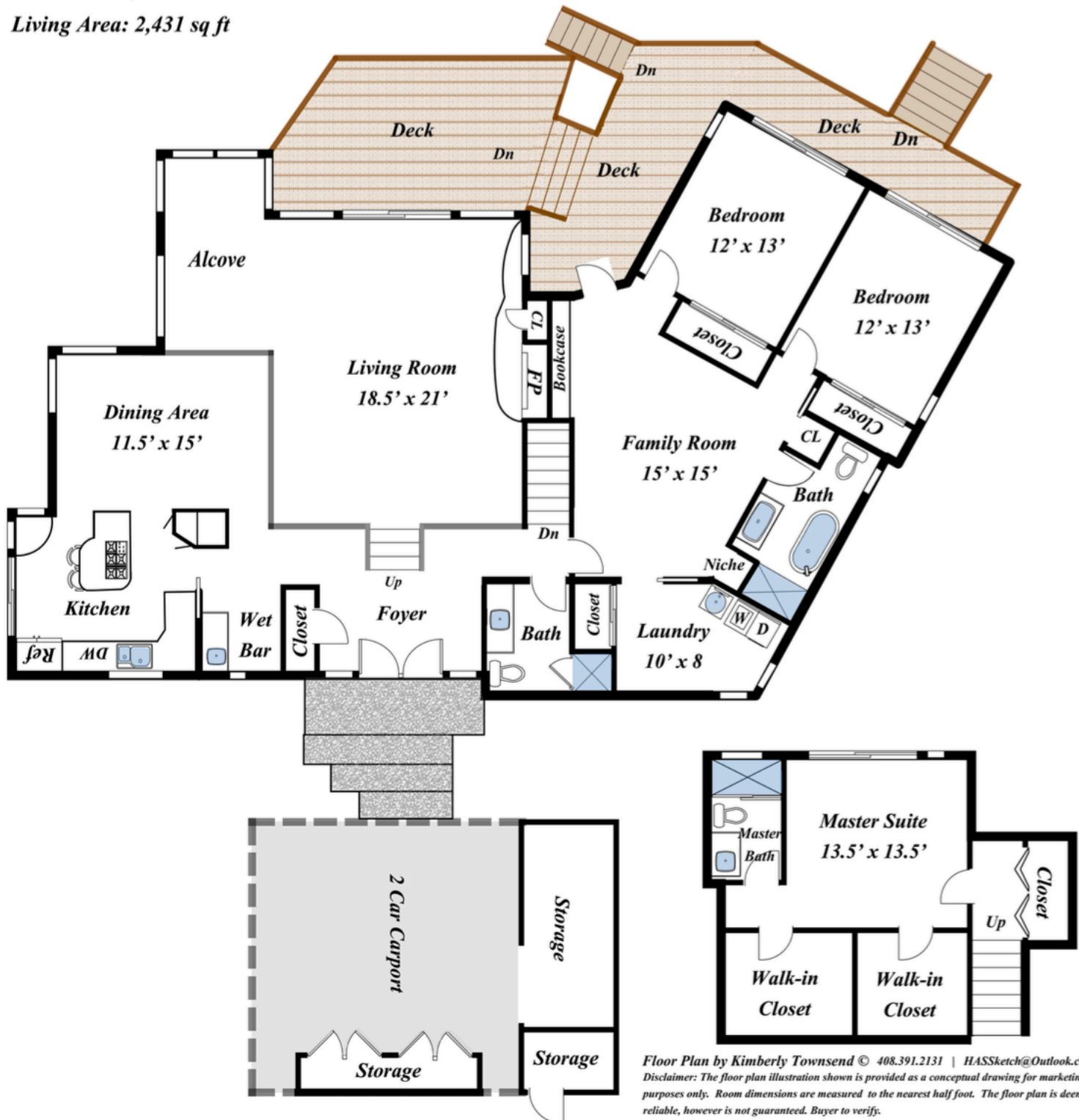


27290 Byrne Park Lane, Los Altos Hills, CA 94022

Living Area: 2,431 sq ft



Floor Plan by Kimberly Townsend © 408.391.2131 | HASSketch@Outlook.com
Disclaimer: The floor plan illustration shown is provided as a conceptual drawing for marketing purposes only. Room dimensions are measured to the nearest half foot. The floor plan is deemed reliable, however is not guaranteed. Buyer to verify.